



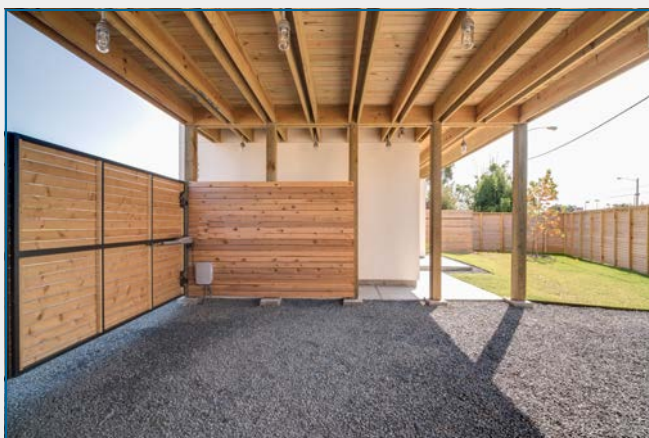
sandragunn
PROPERTIES

BOULEVARD
REALTY

3000 HAWKINS ST.
EADO

3000 HAWKINS ST.

EAST END REVITALIZED



3000 Hawkins is the culmination of exceptionally thoughtful, ultra-efficient design and quality construction. And it's found in a location that is redefining urban living in Houston.

Created by renowned Scott Strasser Design with sustainability in mind, 3000 Hawkins was created with a small footprint and a compact, energy-saving layout. This also allows for a remarkable amount of green space for the area, even room for a pool, accented by modern, minimalist landscaping. The ultra-efficient floor plan allows for no wasted space, while its crisp exterior demands attention for its sculptural presence overlooking the Harrisburg Esplanade. It is a monument to the revitalization of the area, yet has a distinct character of its own.

ROOM DIMENSIONS

LIVING ROOM	15 x 22
DINING ROOM	15 x 10
KITCHEN	16 x 9
MASTER BEDROOM	15 x 13
BED 2	15 x 11
BED 3	15 x 11
TERRACE	700+ SF



For Additional Information:

Mandy McGowen

Direct: (713) 825-6996
mandy@yourblvd.com
sandragunn.com/hawkins

3 BEDROOMS, 2.5 BATHS
2 CAR CARPORT
YEAR BUILT: 2014
LIVING SPACE: 2,295 SF
LOT SIZE: 4,116 SF



The living area with zero base detail along walls and matte-finish solid hickory floors provides an unobtrusive frame for this unparalleled Downtown skyline view.



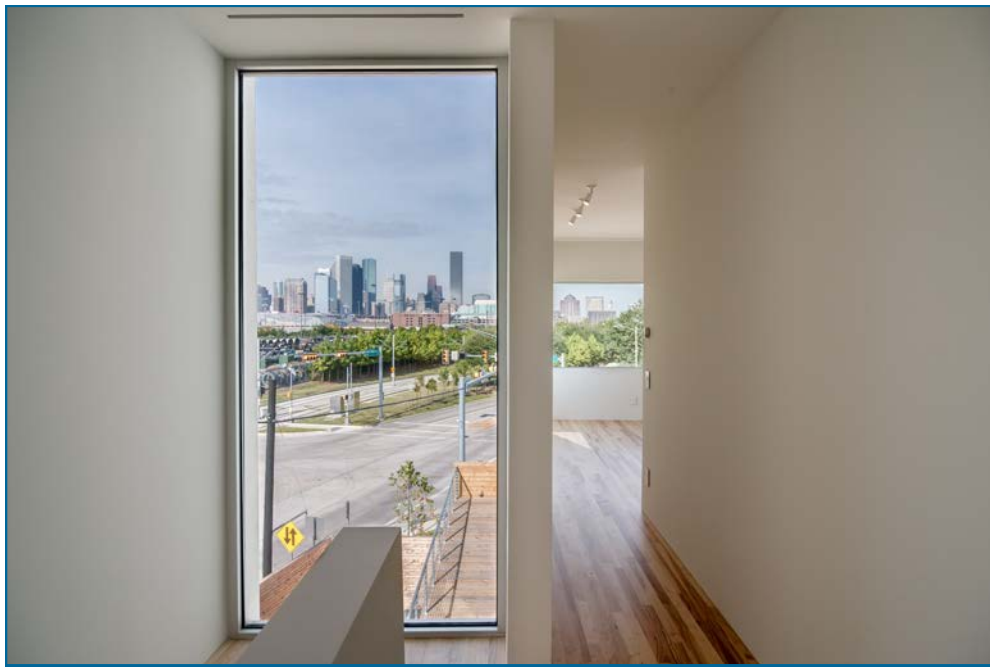
Honed granite counters and custom quarter sawn walnut cabinets contribute to clean, elegant lines throughout.



Imagine entertaining here — 700+ sf of heaven extending from the living area. This expansive terrace also looks onto Downtown.



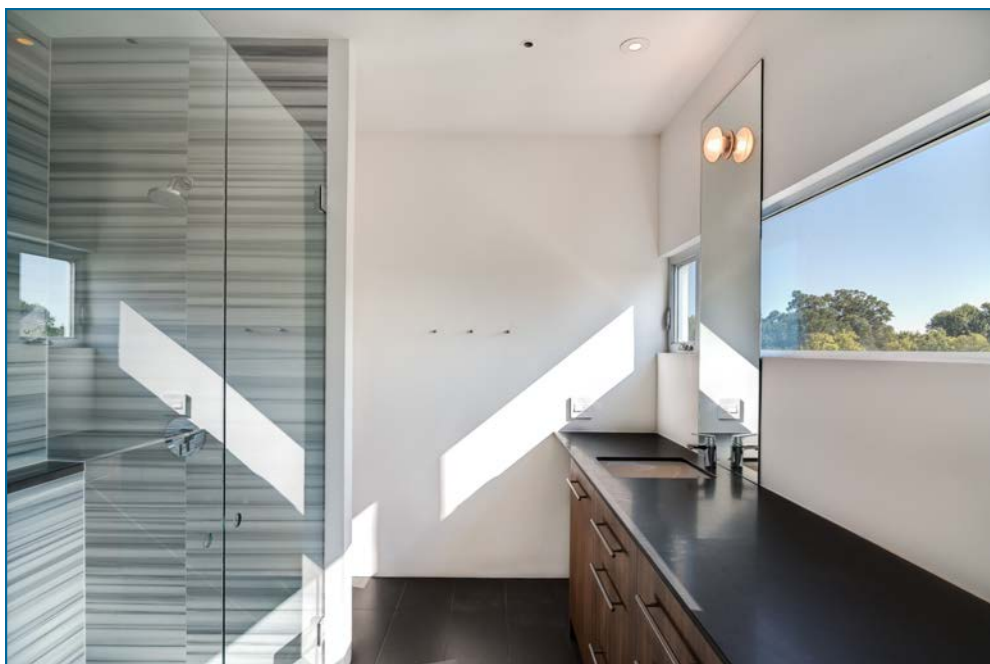
With a nod to traditional design of separation of the kitchen space, this concealed prep area still provides maximum natural light.



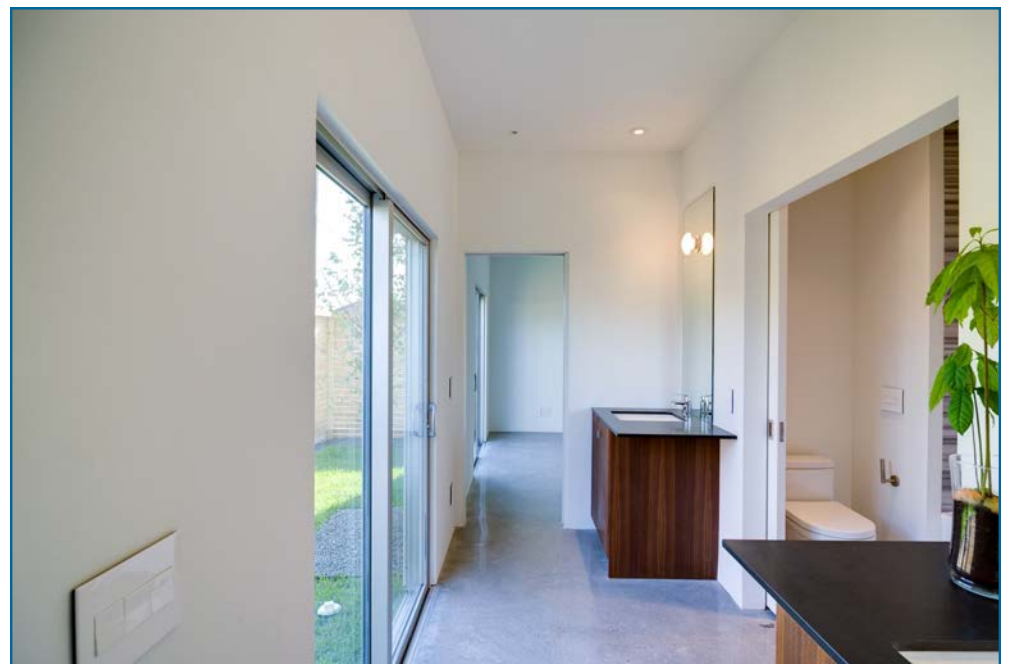
This enviable reading nook will be a favored spot in the home. A floor-to-ceiling window overlooks the canopy of the Harrisburg esplanade and Houston's skyline.



Full floor master retreat offers another panoramic view, flanked by three art walls with gallery lights. Operable casement windows for those crisp nights.



Full of natural light, master bath has extended double vanity with seating areas, operable windows, and striking frameless mirrors.



Common bath for the downstairs bedrooms features dual vanities and a recessed door for the wet area assuring privacy, and a trio of sliding doors to the outside.